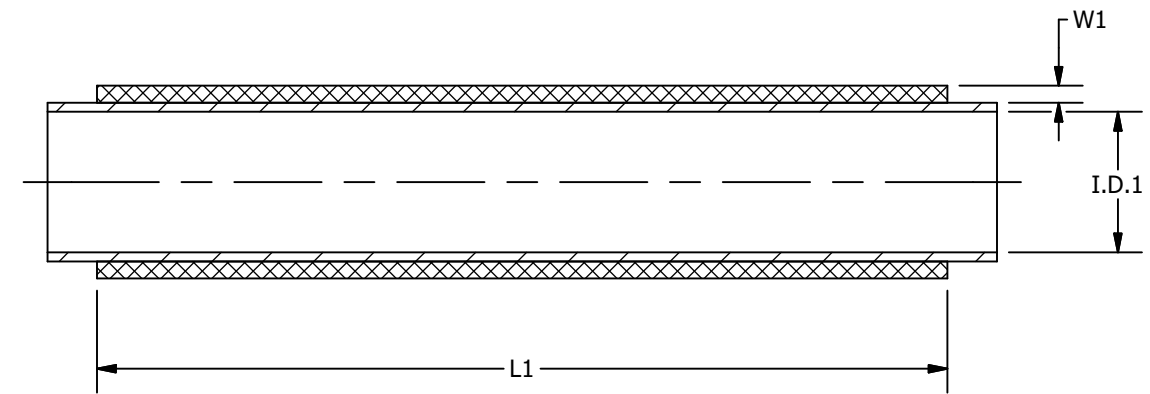
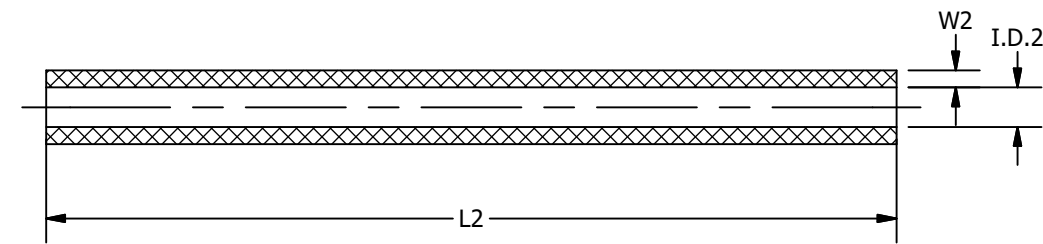


CATALOG NUMBER	I.D.1	AFTER FULL SHRUNK		I.D.2	L2	W2
		L1	W1			
CCSC110300	1.10 [28]	2.91 [74]	.06 [1.6]	.28 [7]	2.91 [74]	.12 [3]
CCSC110600	1.10 [28]	5.91 [150]	.06 [1.6]	.28 [7]	5.91 [150]	.12 [3]
CCSC110800	1.10 [28]	7.99 [203]	.06 [1.6]	.28 [7]	7.99 [203]	.12 [3]
CCSC126300	1.26 [32]	2.91 [74]	.06 [1.6]	.49 [12.5]	2.91 [74]	.09 [2.2]
CCSC126600	1.26 [32]	5.91 [150]	.06 [1.6]	.49 [12.5]	5.91 [150]	.09 [2.2]
CCSC126900	1.26 [32]	9.02 [229]	.06 [1.6]	.49 [12.5]	9.02 [229]	.09 [2.2]
CCSC146300	1.46 [37]	2.91 [74]	.06 [1.6]	.63 [16]	2.91 [74]	.10 [2.5]
CCSC146600	1.46 [37]	5.91 [150]	.06 [1.6]	.63 [16]	5.91 [150]	.10 [2.5]
CCSC146900	1.46 [37]	9.02 [229]	.06 [1.6]	.63 [16]	9.02 [229]	.10 [2.5]
CCSC200300	2.09 [53]	2.91 [74]	.08 [2.1]	.75 [19]	2.91 [74]	.12 [3]
CCSC200600	2.09 [53]	5.91 [150]	.08 [2.1]	.75 [19]	5.91 [150]	.12 [3]
CCSC200900	2.09 [53]	9.02 [229]	.08 [2.1]	.75 [19]	9.02 [229]	.12 [3]
CCSC2001200	2.09 [53]	12.01 [305]	.08 [2.1]	.75 [19]	12.01 [305]	.12 [3]

REV	DATE	DESCRIPTION	ECO	BY	C'H'K.
C	09/26/2019	UPDATED TABLE DATA	52238	JL	GR



BEFORE SHRUNK



AFTER SHRUNK

**NOTES:**

- DIMENSIONS IN [ ] BRACKETS ARE IN MILLIMETERS ROUNDED OFF TO THE NEAREST MILLIMETER, UNLESS OTHERWISE NOTED, AND ARE FOR REFERENCE ONLY.
- COLD SHRINK IS RATED 1000V MAX AND 90° C.
- SEE FORM50091595 FOR INSTALLATION INSTRUCTIONS AND THE BURNDY CONNECTOR SIZES THESE COLD SHRINKS CAN BE USED WITH

TO ORDER BURNDY® PRODUCTS CALL		CLEAR COLD SHRINK TUBES	
UNITED STATES 1-800-346-4175 (LONDONDERRY, NH)		ITEM NO: SEE TABLE	
CANADA: 1-800-361-6975 (QUEBEC) 1-800-387-6487 (ALL OTHER PROVINCES)		CAT. NO: SEE TABLE	
FOR PRODUCT INFO: <a href="http://www.burndy.com">http://www.burndy.com</a>		DRAWN BY: D.DHEENA	3/23/2018
		CHECKER: --	
		DSN APRVL: R.RPMAN	11/12/2018
		MFG APRVL: M.STEVENS	11/12/2018
		QA APRVL: T.WATTS	11/12/2018
		MKT APRVL: K.BOUTIN	11/12/2018
PROJ #:	SIZE	DRAWING NO	REV
PROJECT #:	B	50090656	C
DOCUMENT TYPE: SALES			
REL LEVEL: Released			
		SHEET 1 OF 1	